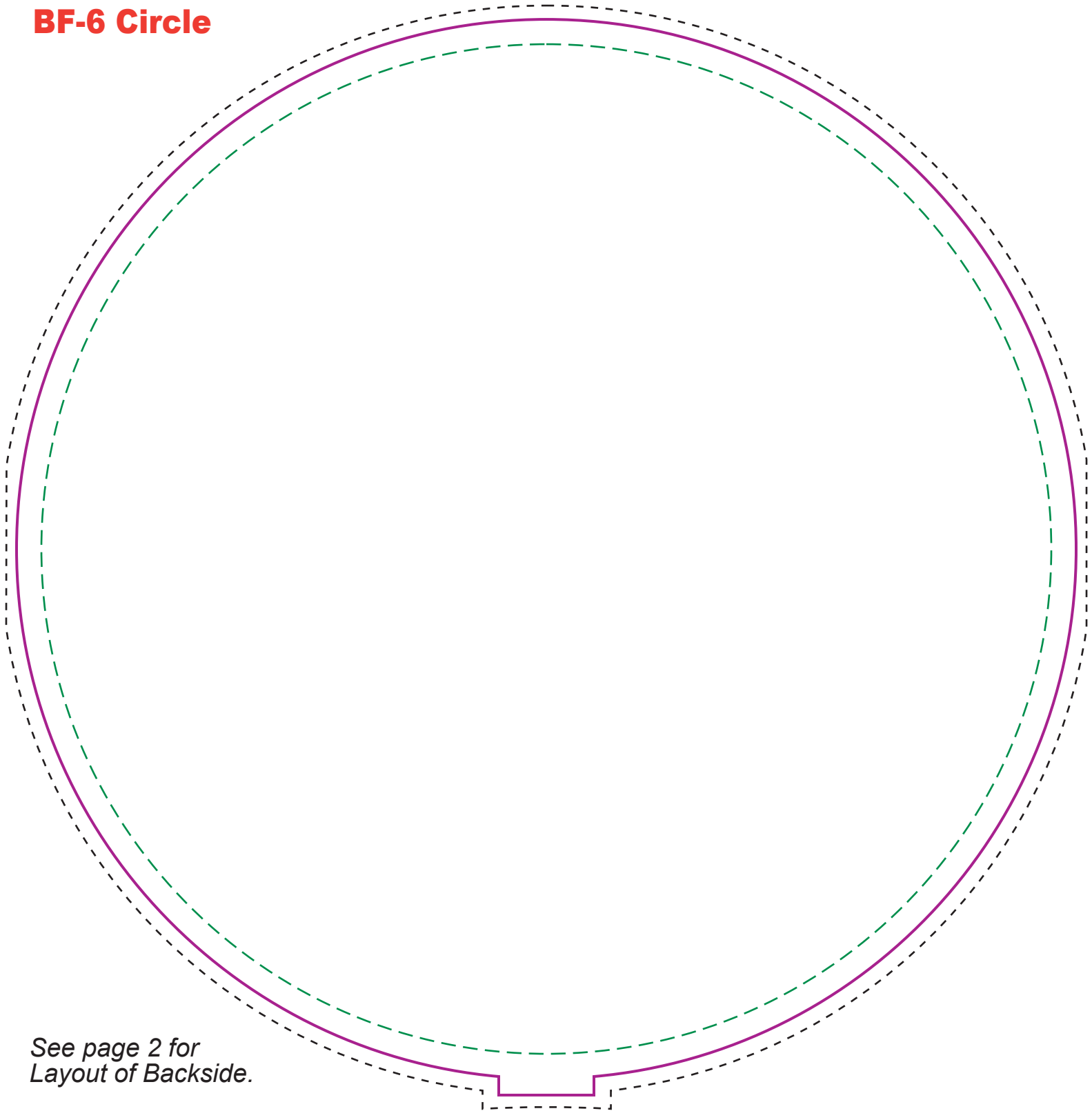


*Actual size*  
**Width: 8 in.**  
**Height: 8 in.**

- ..... **Bleed Line** (*1/8" offset from Die Line*)
- **Die Line** (*represents actual cut product*)
- - - - **Live Area** (*3/16" inset from Die Line*)

**BF-6 Circle**

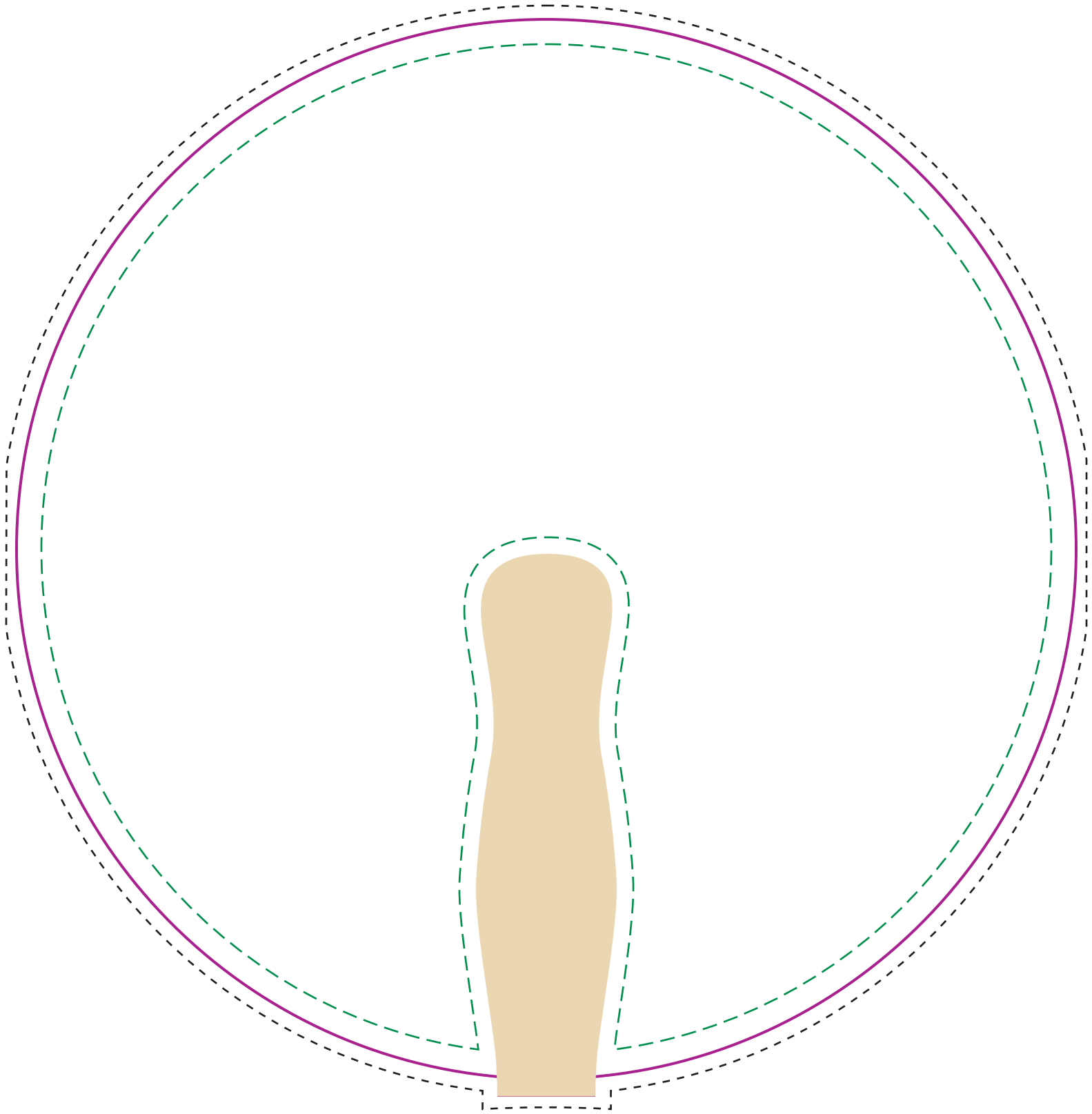


*See page 2 for  
Layout of Backside.*

Please keep all text and graphics inside the Live Area unless the graphic element is intended to bleed. Borders, if included, should bleed outward from the Live Area. Please model spot colors using the Pantone solid coated Matching System  
**Please submit all Fonts and Links for output with your Final Composite.**

*Actual size*  
**Width: 8 in.**  
**Height: 8 in.**

**BF-6 Circle**



- ..... **Bleed Line** (*1/8" offset from Die Line*)
- **Die Line** (*represents actual cut product*)
- - - - **Live Area** (*3/16" inset from Die Line*)